



LISTGROVE

INTERNATIONAL RECRUITMENT & HUMAN RESOURCES
PERFORMANCE THROUGH PEOPLE



INTERNATIONAL RECRUITMENT & HR SPECIALISTS ACROSS THE PLASTICS, PACKAGING,
PETROCHEMICALS, CHEMICALS, ENERGY AND RECYCLING SECTORS SINCE 1975



YOUR PARTNER FOR GLOBAL RECRUITMENT AND HR SERVICES

Listgrove appreciate the demands of today's recruitment challenges and have created a range of professional services dedicated to the global Plastics, Packaging, Chemicals and Petrochemical sectors. Listgrove will support your recruitment needs across all functions

and levels of seniority, delivering results through innovative sourcing and assessment processes, utilising our multi-lingual consultants and effective complimentary HR services.

Key facts:

- Worldwide support for in excess of 45 years
- Multiple facilities across the globe
- Extensive network of professionals across our key markets
- Access to a wealth of market specific intelligence
- Awareness of local cultures, activities and expectations
- Support of executive, managerial, specialist and multiple recruitment projects
- A recognised and trusted brand
- A regular exhibitor at some of the World's leading market focused exhibitions

“Milacron have used Listgrove for several years and have always been happy with the dedicated service they provide. They have supported us with the recruitment of commercial, engineering, technical and executive roles across Europe. I would recommend Listgrove for their industry knowledge, careful attention to detail and experience to put forward exactly the right candidates.”

Human Resources, Milacron - Mold-Masters Europe, Germany - Machinery



LISTGROVE SERVICES

- Board Level Appointments
- Executive Search
- Volume Recruitment
- Interim Appointments
- Outplacement
- HR Support
- Global Talent Tracking
- Retention & Rewards
- Competency Frameworks
- Management Coaching
- Assessment & Development
- Salary Surveys
- Market Research
- TUPE
- Redundancy Consultation
- Relocation Advice
- HR Policy Development
- Psychometric Profiling
- Verbal & Numerical Reasoning
- Succession Planning
- 360 Degree Assessment
- Culture Shaping
- Workforce Performance, Inclusion & Diversity

“Together with Listgrove we have filled key positions across General Management, Group Health & Safety, Logistics, Technical, HR and Commercial functions. I see them as an important business partner and would have no hesitation recommending their services.”

HR Director, Coveris, UK – Flexible Packaging



MARKET SECTORS



- Automotive
- Aerospace
- Beverage
- Biotechnology
- Capital Machinery
- Chemical Processing
- Coatings
- Construction
- Electronics
- Energy
- FMCG
- Food
- Healthcare
- Life Sciences
- Medical Device
- Natural Resources
- Oil & Gas
- Personal Care
- Pharmaceutical
- Print
- Rubber
- Teletronics
- Textile
- Transportation

A UNIQUE APPROACH TO THE RECRUITMENT PROCESS

At Listgrove we firmly believe in considering all possible options for the sourcing of candidates from the very beginning of the process. We continue to invest in our extensive network that has been developed since 1975.

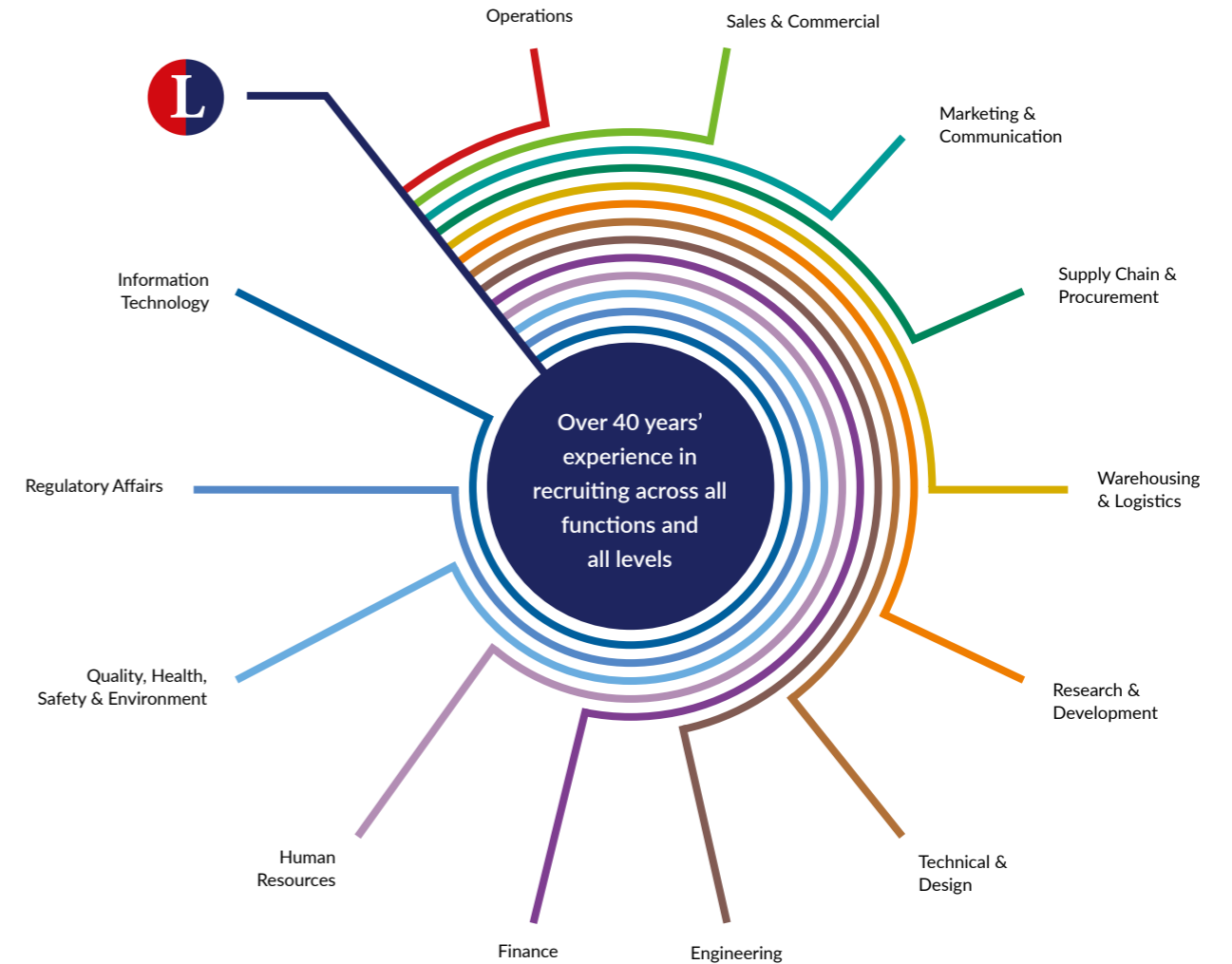
A proven assessment process provides each client with access to a selection of individuals that are capable of meeting with each role's fundamental objectives and the organisation's cultural needs.

“Since engaging with Listgrove over a year ago, they have successfully completed a number of roles for Pirelli. Experts in their field, Listgrove were able to match multiple excellent candidates with the characteristics and experience we desired. In addition, one of the roles required a candidate with a very specific set of skills, which can be difficult to find in the current market. Nevertheless, they were able to identify, within a timely manner, an individual that fitted our requirements perfectly, due to their deep knowledge and outstanding communication throughout the project. We would not hesitate to recommend Listgrove.”

Talent Acquisition & Employer Branding Manager, Pirelli Tyre S.p.a – Automotive



BOARD LEVEL, MANAGERIAL AND SPECIALIST APPOINTMENTS



SUPPORTING CLIENTS AROUND THE WORLD

Customers engage Listgrove when they have particularly demanding needs and where traditional recruitment methods are unable to provide the desired selection of candidates. We have achieved considerable

success across 6 continents, supporting a wide range of recruitment briefs, for which an extensive global network of candidates has proven highly effective.

“When faced with the difficult challenge of replacing our retiring Operations Director, we found the support and service of Listgrove invaluable. Not only was their dedication in finding the right candidate unquestionable, the advice and professionalism they demonstrated along the way instilled us with total confidence.”

Chief Sales Officer, Albis Plastic GmbH, Germany - Thermoplastics and Compounds

ALBIS



“Listgrove is an expert in their field and it has been a pleasure to work with them in the recruitment of several roles within our European offices. They have shown an in-depth understanding of our needs and matched some outstanding candidates to both our specification and corporate culture. From the beginning to the end of the process the support was unwavering. I would unreservedly recommend Listgrove to others.”

Human Resources Director, Morchem, Spain - Chemicals

MORCHEM
Specialty Adhesives & Coatings

LISTGROVE OFFICES

NORTH AMERICA

Listgrove USA

2200 Pennsylvania Avenue, N.W
4th Floor East
Washington
District of Columbia
20037-1701
United States of America
T: +1 202-507-5898

EUROPE

Head Office

16 The Courtyard
Timothy's Bridge Road
Stratford-upon-Avon
CV37 9NP
United Kingdom
T: +44 (0) 1789 207070

Listgrove Germany

Airport City, 3rd Floor
Peter-Müller-Str. 3
40468 Düsseldorf
Germany
T: +49 (0) 211 42471 5676

Listgrove France

Campus Verrazzano
Building A, Ground Floor
3 Place Giovanni da Verrazzano
69009 Lyon
France

Listgrove Spain

World Trade Centre
Muelle de Barcelona
Edificio Sur, 2ª planta
08039 Barcelona
Spain

MIDDLE EAST

Listgrove Dubai

DWTC Districts
Sheikh Zayed Road
Dubai World Trade Center District
C1 Building, Level 1
Dubai
UAE

ASIA

Listgrove China

17/F, Building A
CCIG International Plaza
No.331 North Caoxi Road
Xuhui District
Shanghai 200030
China
T: +86 (0) 21-24225245



LISTGROVE

INTERNATIONAL RECRUITMENT & HUMAN RESOURCES
PERFORMANCE THROUGH PEOPLE

www.listgrove.com



Head Office, 16 The Courtyard, Timothy's Bridge Road, Stratford-upon-Avon, CV37 9NP, United Kingdom
T: +44 (0) 1789 207070 E: contact@listgrove.com